

# TOOLS FOR DAILY MANAGEMENT, EVALUATION OF RESULTS AND TROUBLE SHOOTING HEIFER PRODUCTION

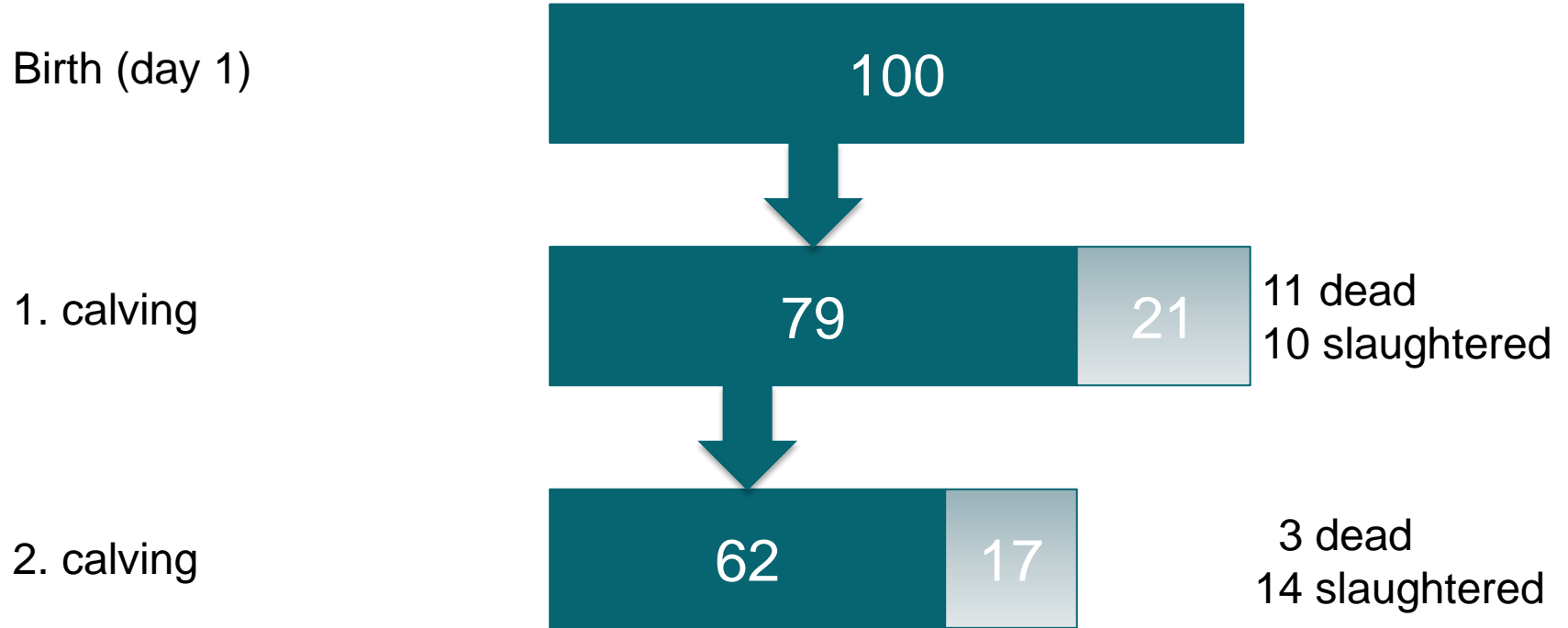
Catalonien,

14th – 18th March 2017

STØTTET AF  
**promilleafgiftsfonden**  
for landbrug



# THE LOSS OF HEIFERS TO 2. CALVING



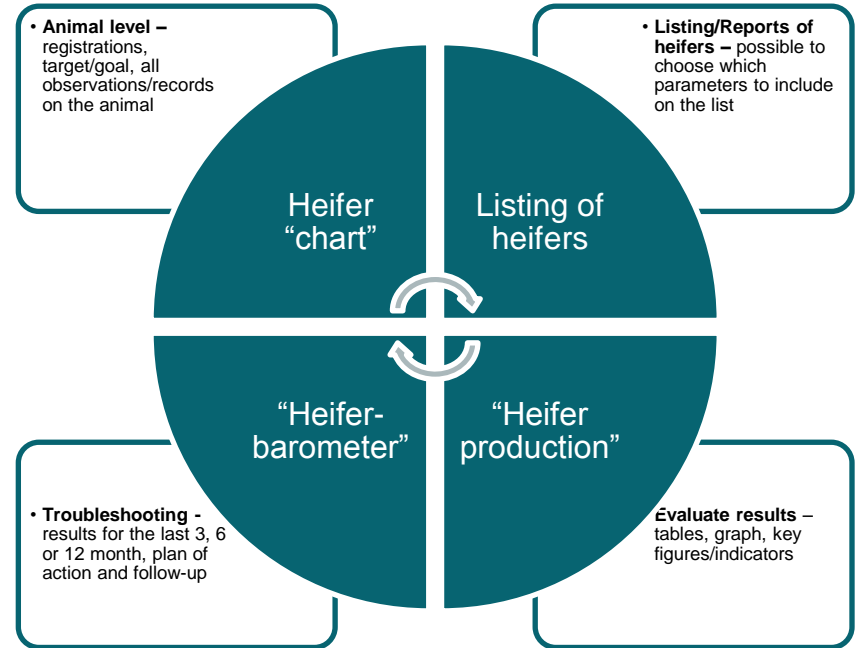
# TOOLS FOR EVALUATING HEIFER PRODUCTION

## Reports/listing of heifers

- Records – diseases etc.
- Growth

## Evaluate results

## Troubleshooting

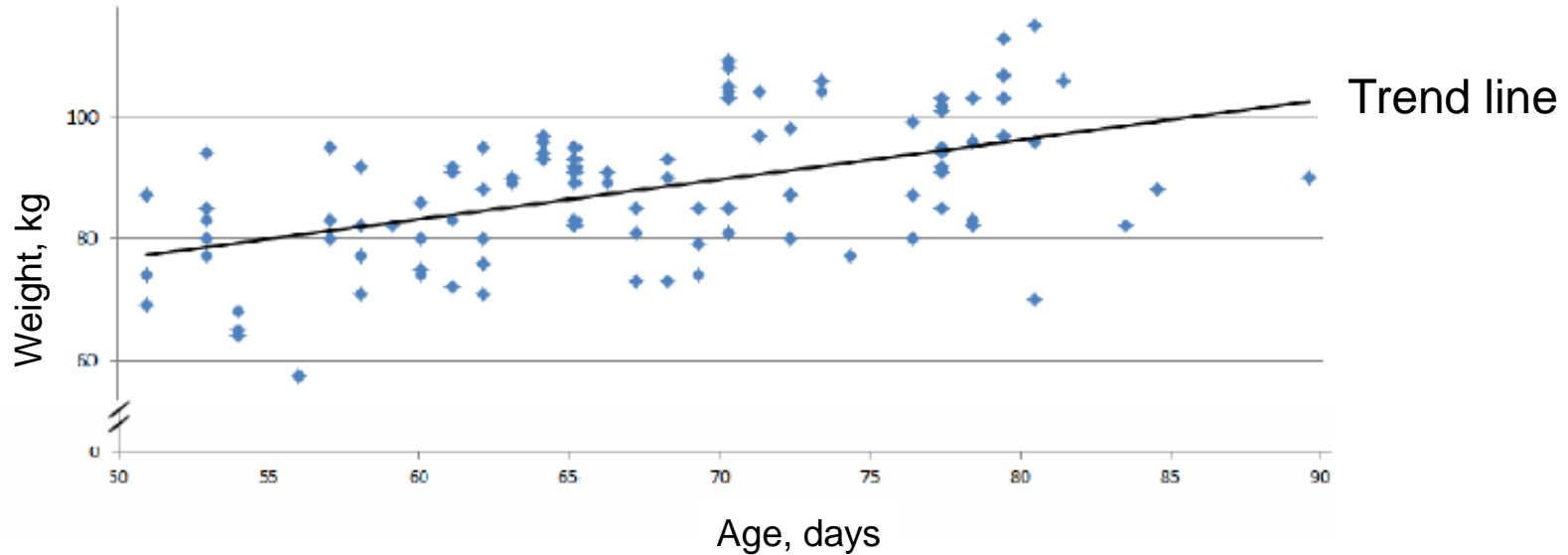


# TARGETS/GOALS

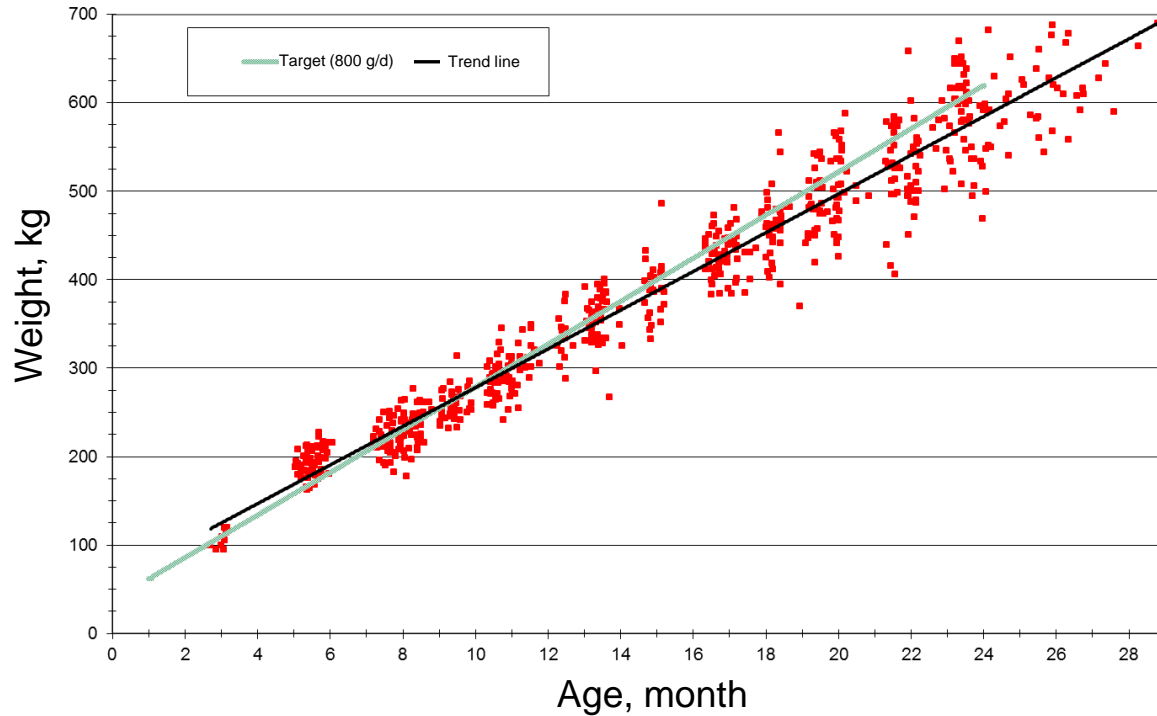
Breed / birth weight	Holstein (42 kg)	Red (42 kg)	Jersey (25 kg)	Cross (42 kg)
Age at 1. calving (mo)	24,0	24,5	22,5	24,0
Mature body weight (kg)	660	660	450	660
ADG 0-8 weeks (g/day)	750	750	446	750
ADG 2-12 mo. (g/day)	820	780	660	820
ADG > 12 mo. (g/day)	810	810	535	810
% of mature body weight at calving	85	85	85	85
% of mature body weight at breeding	55	55	55	55

The blue cells are calculated as a consequence of the above (Age, MBW, ADG)

# WEIGHT AND AGE, 0-3 MONTHS

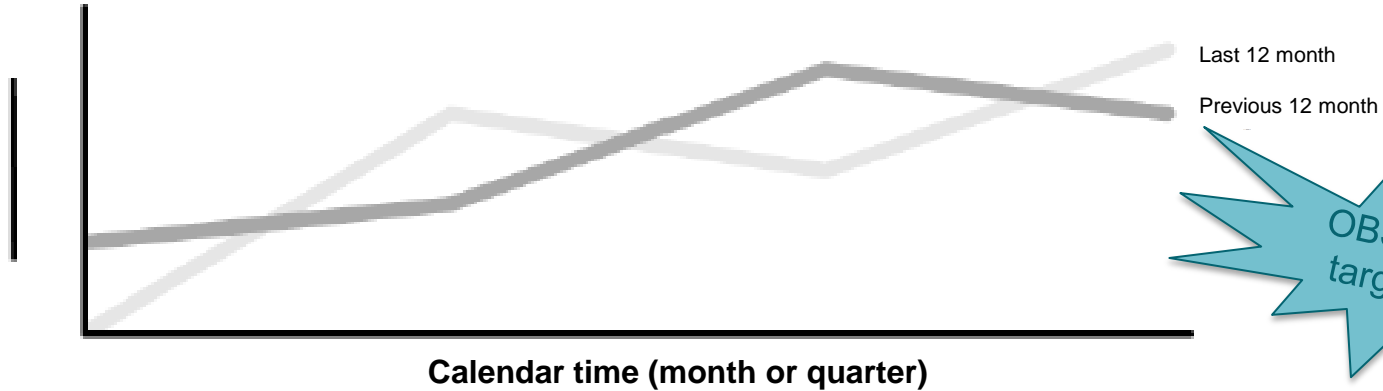


# WEIGHT AND AGE, 3 MONTHS - CALVING



# GROWTH, DEVELOPMENT DURING TIME

Daily growth (g/day), 0 – 8 weeks



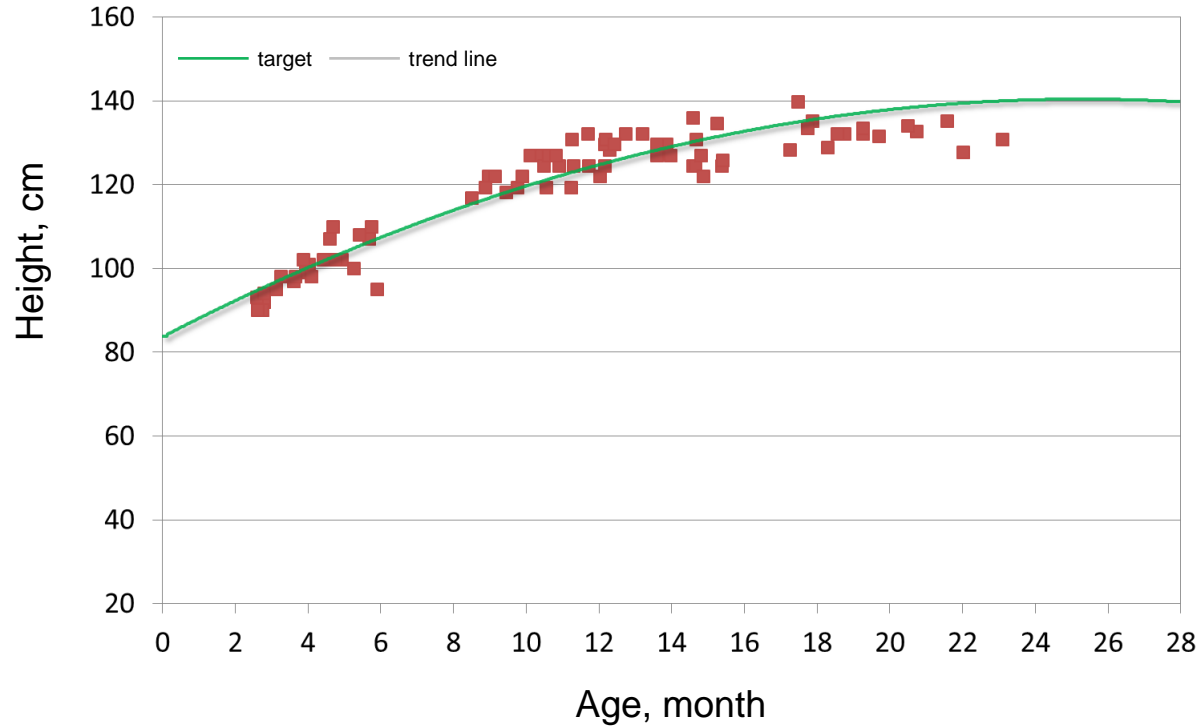
Month	Jan. '16	Feb. '16	Mar. '16	Apr. '16	May '16	Jun. '16	Jul. '16	Aug. '16	Sep. '16	Oct. '16	Nov. '16	Dec. '16
No. of calves weighed 4-12 weeks												
Estimated average growth, g/day												







# HEIGHT AND AGE



# NEW KEY FIGURES/INDICATORS

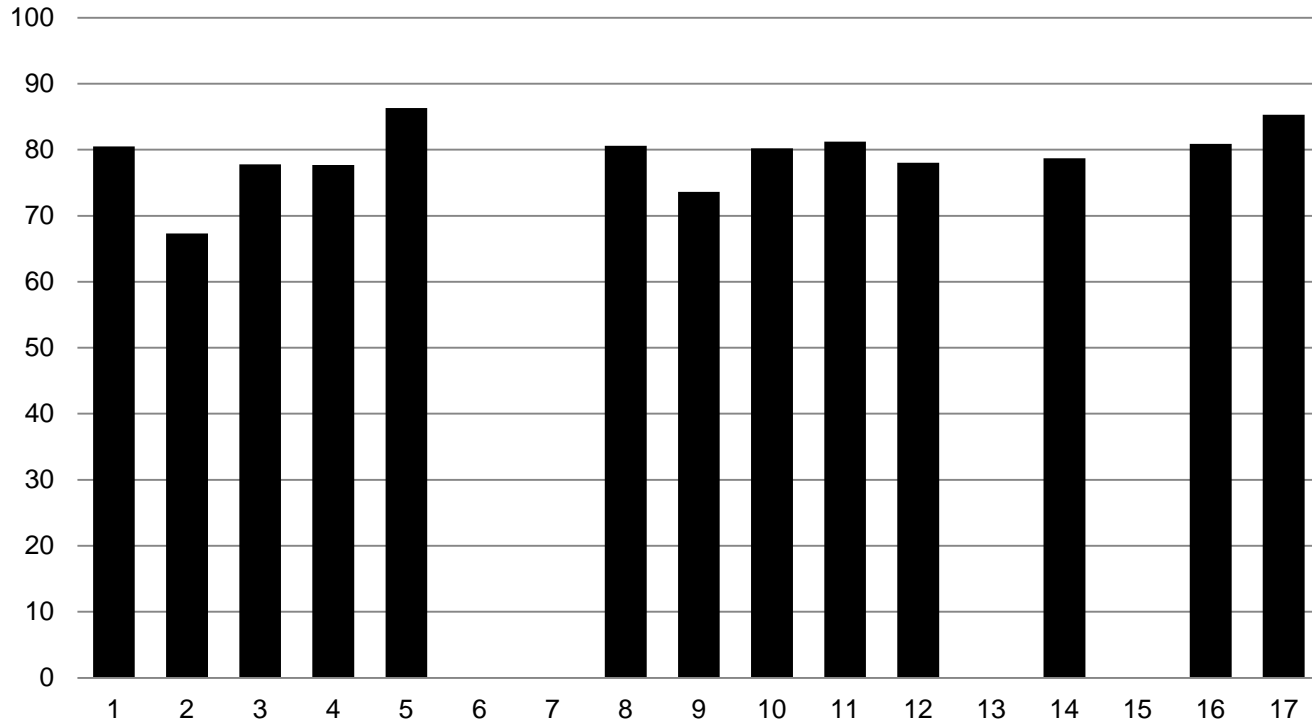
‘Heifers reaching 60 days of lactation, pct.’

- Heifers which reaches calving x  
longevity for 1st calvers until 60 days after calving

‘No. of feeding days per calving heifer produced’

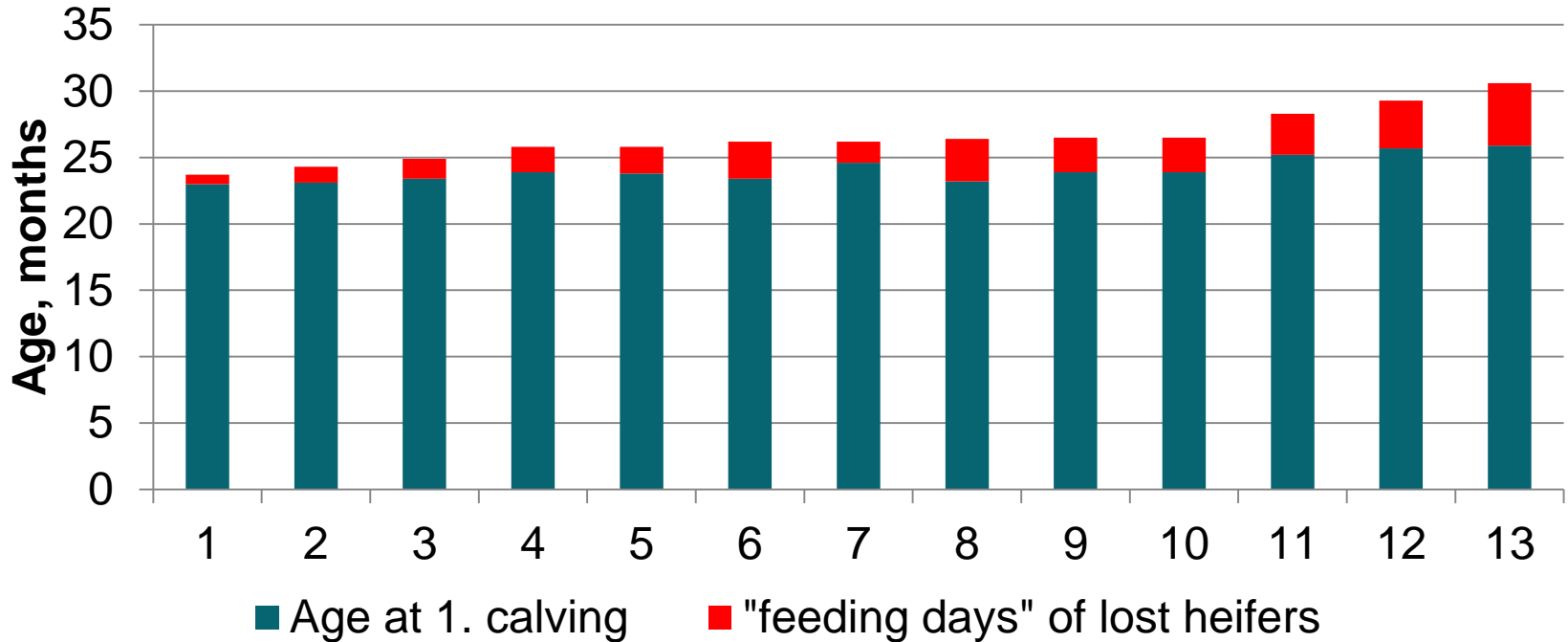
- Average calving age +  
feeding days for lost heifers per calving heifer produced

# PROBABILITY OF SURVIVAL UNTIL CALVING + 60 DAYS



■ Probability for a heifer to survive until 60 days after 1st calving

# FEEDING DAYS PER CALVING HEIFER PRODUCED



# 'HEIFER BAROMETER'

Overview **DYR I KVIE-PERIODER** ?

STATUS **'Heifer periods'** Plan of action 'More knowledge'

Birth to 2 month SOP

<b>Indicators</b>		Achieved	Target	Show graph
	Diarrhea 0-2 weeks	8%	<5%	
	BRD 0-2 month	6%	<3%	
	Weight 8 weeks	2%	<3%	

2 month to puberty SOP

Breeding heifers SOP

Pregnant heifers SOP

1. Calvers to 150 days in lactation SOP

# 15 KEY INDICATORS

1. Diarrhea 0-2 weeks
2. BRD 0-2 month
3. Doubling of birth weight by 8 weeks
4. BRD 2-6 month
5. ADG, weaning to breeding
6. Weight at breeding
7. Inseminated 'on time'
8. Rebreeders
9. Age at 1. calving, std.
10. Weight at 1. calving

# 15 KEY INDICATORS

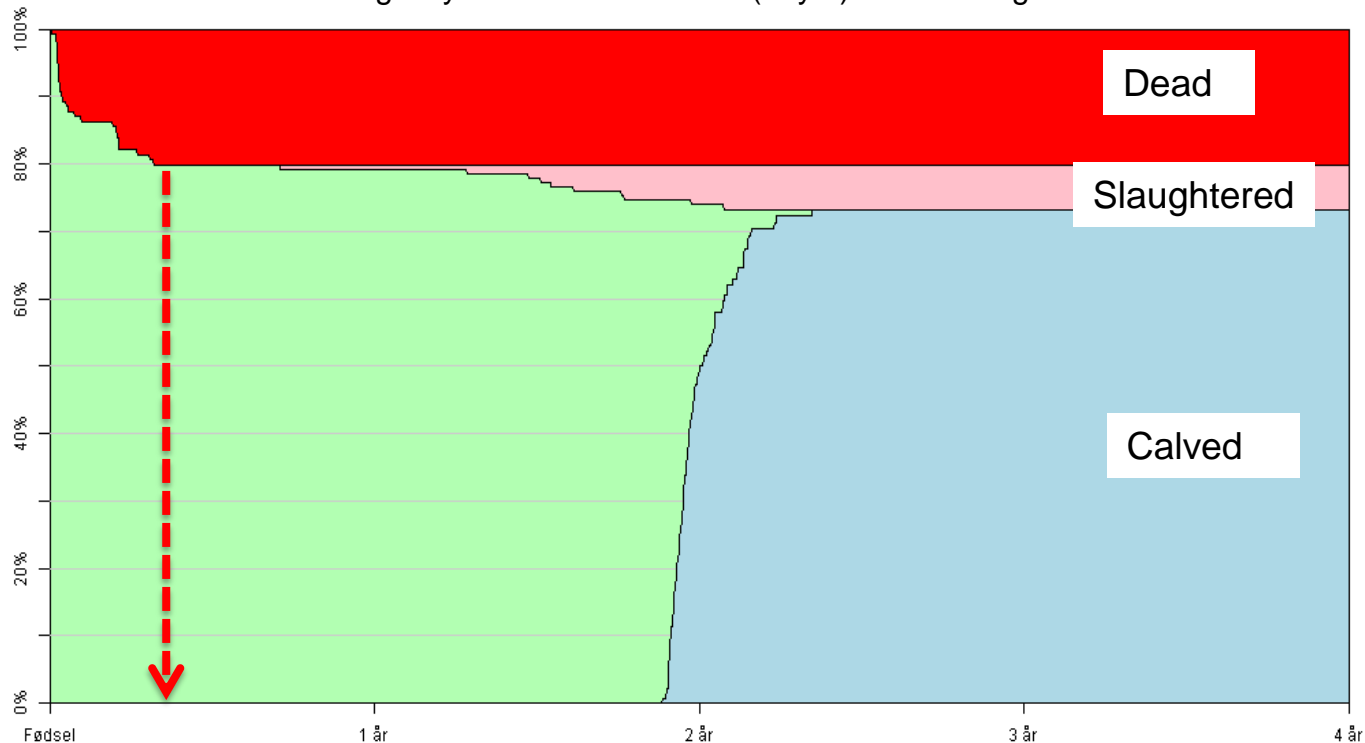
11. Still birth
12. SCC at 1. test day
13. Survived to day 60 in 1. lactation
14. Milk yield, 1<sup>st</sup> calvers compared to 3+ cows
15. Milk yield, variation




# LONGEVITY GRAPHS, EXAMPLE 1

Prototype / POC  
JNI/stat, V 0.27  
SEGES Kvæg, 09 nov 2016

Longevity of heifers from birth (day 1) to 1. calving



**Minimum cost from birth to**   
**pr. 100 animal  $\approx$  2.300 €**

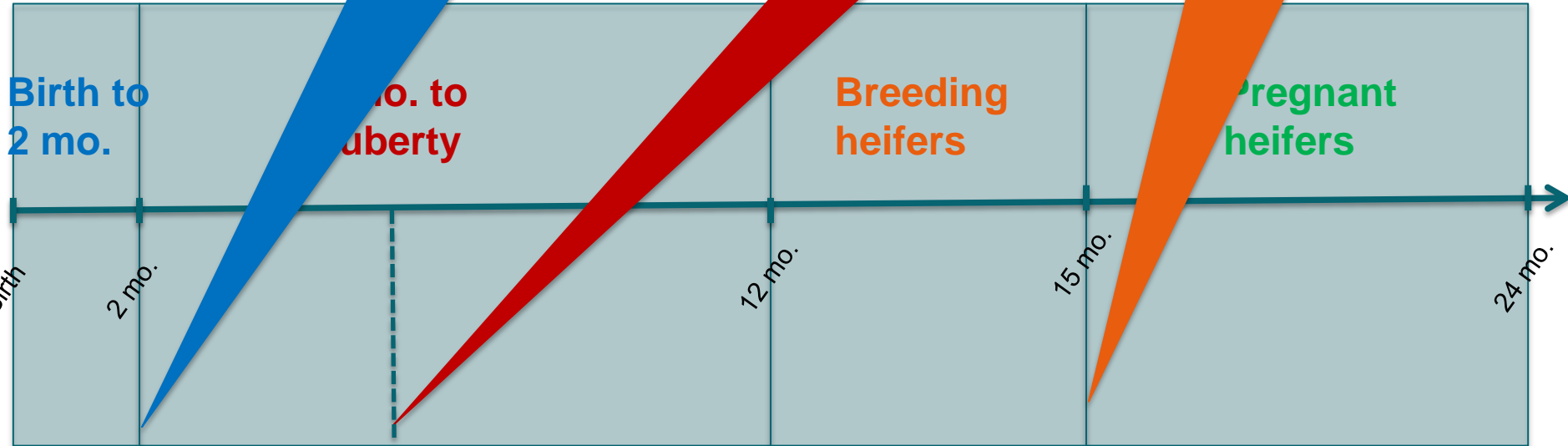
Kilde: Projekt Økonomisk optimal production af kælvekvier

# 'HEIFER PERIODS'

Diarrhea 0-2 weeks  
BRD 0-2 month  
Doubling of birth weight at day 56

Diarrhea 2-6 month  
BRD 2-6 month  
Daily weight gain

Weight at breeding  
Inseminated 'on time'  
Rebreeders



# 'HEIFER PERIODS'

Age at 1. calving, std.  
Weight at 1. calving  
Still birth

